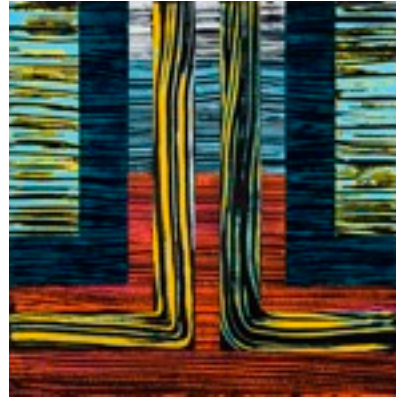


Elyce Abrams
Bio 2013
elyce@elyceabrams.com
elyceabrams.com



Elyce Abrams is an abstract painter from Philadelphia, represented by Blank Space Gallery in Chelsea, NY. She received her MFA in December 2004 from the University of the Arts and her BFA from Tufts University/School of the Museum of Fine Arts. Abrams has received awards including an Artist's Grant from the Vermont Studio Center and a MFA Merit Scholarship from the University of the Arts. Work has been included in solo and group shows including: Duo Exhibition, Blank Space Gallery, Chelsea, NY; Constructs: Rowan University Studio Faculty Exhibition, Rowan University Art Gallery, Glassboro, NJ; Blank Space Pop-Up Gallery, Seoul, Korea; Sixth Annual Small Works Show, 440 Gallery, Brooklyn NY; Between the Studio and Facebook, Main Line Art Center, Haverford, PA; Long Distance, Bridgette Mayer Gallery, Philadelphia, PA; New Paintings - Elyce Abrams, Ohio University, Athens, OH; and (In)finite Place, Rodeph Shalom, Philadelphia Museum of Jewish Art.